



Kobe City PR Paper English August 2023

Your local "theme park"  
Let's go to the public baths!



If you have any questions about ward office procedures, financial support for raising children, etc.



↑ Tap here to visit the website!

Call the Kobe International Community Center (KICC)!

☎ 078-742-8721 (11 languages)



Edited by: Kobe City International Division

### 3 reasons to love public baths

From the old-fashioned traditional reception desk and tiled murals, to wide bathtubs and open-air baths, and even saunas - Japanese public baths are like theme parks that merge old-timey vibes with relaxation! Pop by your local public bath sometime!

#### #1: Only 450 yen

At the public bath, you can enjoy a blissful time for just 450 yen. Use it to refresh yourself after a hard day of work or study, or when you want to chat with friends!

#### #2: A warm community

When socializing with others while naked, people naturally feel closer to each other - There are some who meet for the first time at a public bath and become drinking buddies. The public bath is also a place where the locals can watch over the growth and changes in the members of their community.

#### #3: More attractions besides baths

Many public baths also have amenities such as saunas, massage chairs, dining, etc. Wash off your sweat after a hike in the mountains, enjoy a post-bath bite while strolling through the nearby shopping arcades... Enjoy Kobe's distinctive public baths in these ways and more!



Find your nearest public bath  
Kobe Public Bath Map (JP) →



### Local Family Bathing Discounts

Children accompanied by an adult can bathe for **FREE** (no limit)

Each adult that comes with a child pays **HALF PRICE!** (1 adult per child)

**Eligibility:** Adults and children (do not have to be parent & child)

**Period:** Until March 31, 2024

Application & participating facilities info (JP) →



### Trail Station Kobe

JR Shin-Kobe Station is one of the entry points to the Rokko Mountains, and from July 22 a support hub will open on the 1st floor.

Nicknamed "Toreko", this hub offers guided tours, shoe rentals, information about hiking courses, and other support from expert staff to ensure anyone can enjoy hiking worry-free. Feel free to drop by before or after your hike.

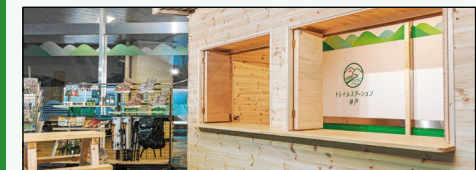
**Hours: (Mar. - Nov.)** M/Th/F/Sa/Su & holidays 8:30 am - 12:00 pm, 1:00 pm - 5:30 pm

**(Dec. - Feb.)** F/Sa/Su & holidays 9:00 am - 12:00 pm, 1:00 pm - 4:00 pm

**Free:** Hiking advice and information, guided hiking tours for beginners

**Fees:** Hiking gear rentals, temporary luggage storage while hiking

Tap for details! (JP) ↓



## A quick lift from Sannomiya! An urban oasis



During the time of year when everyone seeks out cooler air, if you're going to the Rokko Mountains, we recommend Nunobiki Herb Gardens. Located about 400m above sea level, it's a little cooler than the city. It

has a field of sunflowers that stretches out under the refreshing blue sky.

The gardens are also open later through August 31, and they sparkle with illuminations.

**Hours:** 10:00 am - 8:30 pm (Only the observation area stays open past 5 pm)

**Fee:** Required

Tap for details! (JP)→



## Beat the summer heat with fun at the pool

It's the season for feeling hot when outdoors. There are many different kinds of pools in Kobe, including large ones with water slides, small ones that are safe for small kids to play in, pools for practicing competitive swimming, and more. This summer, splash away the heat with activities in the water.



Tap for fees, locations, and more! (JP) ↓



## Before throwing out your oversized garbage, consider reuse options

The amount of oversized garbage thrown out has been increasing each year, and it has increased by about 50% in the past five years. Kobe is working to reduce waste by cooperating with businesses that offer reuse services for unwanted goods. Before paying disposal fees and throwing out oversized household garbage, try a reuse service to find new uses for them.

★Free to use, no processing fees



"O-ikura" is a website that lets you receive appraisals from multiple secondhand shops and compare the offers

- 1 Select the category of each item you want appraised
- 2 Enter information about each item and your personal details before submitting an appraisal request (You can submit a request to multiple shops)
- 3 Choose a secondhand shop from the appraisal results, and arrange for them to pick up your items
- 4 You are done!



Jimoty is a website that lets you make a listing on a bulletin board and pass your unwanted items to someone nearby

- 1 Take a photo of the item and make a post
- 2 When you receive an inquiry, arrange via chat messaging a date and time to make the exchange
- 3 Make the exchange (no need to ship)
- 4 Send a thank you message & you are done!

Tap for details (includes oversized garbage disposal info.) (JP)→



## Parent & Child "Pop-in" Play Areas now open in all wards

A Parent & Child "Pop-in" Play Area opened in Tarumi Ward in June, so now there is one in every ward.



Since these facilities are located in the same buildings as the ward offices, it is easy to drop by if you're coming in for an infant health screening or childcare consultation, and you can also

interact with fellow local parents and children.

They have spaces for young children to freely play while moving their bodies, as well as spaces where infants can safely play. There are also nursing rooms and diaper changing areas.

\*For now, the Tarumi location is on a reservation-only basis in order to avoid crowding. Tap for details! (JP)→



## Gastropolis Kobe Sweet corn

The sweet corn cultivated in Kita and Nishi Wards is sweetest just after harvesting, and it is delicious even eaten raw. Sweetness, flavor, and nutrition



drop the more time passes after it is harvested, so it can be said that corn is best when picked fresh.

Try some juicy, delectable sweet corn!



←Go corn-picking (JP)

Buy it at a farm stand (JP)

