

Bringing you news from Kobe City every month

KOBE

Kobe PR Paper English March 2022

Let's protect the bounty of Kobe's seas



If you have any questions about ward office procedures, financial support for raising children, etc.



↑ Tap here to visit the website!

Call the Kobe International Community Center (KICC)!

☎ 078-742-8705 (11 languages)



Edited by: Kobe City International Division

COVID-19 Vaccination Information

Children (5-11 y.o.) can get vaccinated

Children aged 5-11 years old can get vaccinated from March. Vaccination vouchers have been scheduled to be mailed out in early March. The vaccine used will be the children's version of Pfizer, and parental/guardian consent is required for vaccination.

■ Vaccination venues

Clinics and hospitals administering the Covid-19 vaccine for children

*Vaccinations for children are not available at government vaccination centers

■ How to schedule a vaccination

Follow the administering clinic/hospital's procedures for scheduling a vaccination.

*View the list of administering clinics/hospitals and their procedures on the Kobe City website →



JP

For inquiries about the health-related aspects of the Covid-19 vaccine for children:

*You cannot schedule a vaccination through this number

Kobe City Covid-19 Vaccination Consultation Center for Children's Health

☎ 078-277-3324 FAX 050-3156-0729

9:00-17:00 (every day)

When can I get my booster vaccine?

For those aged 18 and over, vouchers for the booster vaccine are mailed out 6 months after your second dose. Once you receive your voucher, you can:

- Call your clinic/hospital to schedule a vaccination, OR
- Choose a government vaccination center and schedule a vaccination via phone or online



See this information in multiple languages! →



If you are struggling because of Covid-19, You Can Receive Financial Support

Households with sudden changes in finances & resident tax-exempt households

■ Households with sudden changes in finances

Eligibility: Your household paid resident tax for the 2021 fiscal year; your household's income from January 2021 decreased due to Covid-19; and all members of your household are estimated to have less income in 1 year than the threshold for a tax-exempt household.



JP

How to apply: You must apply to receive this benefit. Call the following number to receive an application form, then complete and mail the application. It must be postmarked between Mar. 1 - Sep. 30. *A review of your application is required before the funds can be disbursed

■ Households exempt from resident tax

Confirmation Forms (確認書) are being mailed to eligible households.

How to apply: Complete the Confirmation Form and mail it in the reply envelope. Must be postmarked by June 20.

Kobe City Call Center for Inquiries About the One-Time Special Benefit for Livelihood Assistance

☎ 078-777-4352 FAX 078-945-8106

Weekdays 9:00-17:00 (Multilingual support available)

If you were unable to receive the One-Time Special Benefit for Households with Children due to divorce, etc.

Despite being designated as your child(ren)'s caretaker, if you were unable to receive this benefit due to reasons such as divorce, you can receive a special benefit. **You must apply to receive this benefit.**



JP

How to apply: Check the eligibility requirements at the website on the right, print out the application form, and mail it. Must be postmarked by March 31.

Kobe City Call Center for Inquiries About the Special Livelihood Assistance Benefit for Households with Children

☎ 078-277-3322 FAX 078-322-6119 Weekdays 8:45-17:45

If You are Planning to Move

You can file moving paperwork on Sunday

On March 27 and April 3 between 8:45-17:15, you can file moving paperwork at the ward and branch offices.

■ **Citizen Services Division:** Address change notifications (moving in/out of Kobe), certificate issuances (excluding tax certificates), My Number Card-related procedures

■ **Social Insurance and Medical Expenses Division:** Address changes/enrollment/withdrawal for National Health Insurance, applications for social insurance payment subsidies

*At the Kita Ward Hokushin Office & Kita-Suma Branch Office, go to the Citizen Services Division for all procedures

*Multilingual support is not available on Sundays

If you are moving out of Kobe, you can file the paperwork online

If you have a My Number Card, you can file your Moving-Out Notification from your smartphone. *Note: Your My Number Card must have a digital certificate encoded in the card.

A new space to enjoy food & music! &3Park

Directly connected to Sannomiya Station, this relaxation spot is in its pre-opening stage, featuring food trucks that change every day. With a restaurant corner and various events coming soon, "And Three Park" will become an even more exciting space.



Every day from 11 am, there will be food trucks featuring cuisines from all over Asia (Taiwan, Korea, Vietnam, and more), as well as Kobe sweets and fresh vegetables. There will also be occasional

concerts and other live performances to enjoy.



←About &3Park (JP)

Food Truck schedule (JP)→



Find the seafood of the season at Kobe's Fishing Ports

These fishing ports host regular events where you can get seafood that was caught just that morning or afternoon: You can get fish cut and trimmed in front of you, as well as eat outstandingly fresh seafood. In addition to the seasonal catch, you can find squid and octopus, and even sometimes rare offerings such as spiny red gurnard and thread-sail filefish.

Buy wholesale at Tarumi Fishing Port

The 1st and 3rd Wednesday of every month from April to December is "Fisheries Day", when you can buy freshly caught fish for great prices. Every Saturday is also the "Doyo-ichi" Saturday market, when you can pick out live seafood from the fish tanks and take it home. Try your hand at choosing the freshest fish!



JP

■ A sign of spring: Ikanago no kugini

If you walked the streets of Kobe in March, the air would be permeated with the sweet scent of simmering sand lance for the "ikanago no kugini" dish. But in recent years the numbers of sand lance have decreased due to dwindling nutrients in the sea and environmental changes. In order to protect both the environment and Kobe's cultural tradition, the fishing industry has decreased its harvest to maintain a balance.



Talk fish with the fishermen at Nagata Port

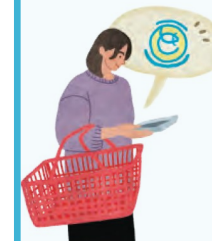
Many fish are caught on a daily basis at Nagata Port, which is located in the Komagabayashi neighborhood. At the popular "Sea & Fish &" seaside market, you can learn the tastiest ways to prepare seafood from the fishermen themselves, as well as cook what you buy right by the sea! Scan or tap the code on the right to see when the next market will be held!



JP

Help Protect Our Oceans— Buy seafood marked with this eco label

The "Marine Eco Label Japan" is used to mark marine products that were fished with the future of the oceans and marine life in mind, such as making sure not to catch small fish. By purchasing seafood marked with this label, you are supporting businesses that are working to protect the ocean and ultimately helping us protect the diversity of our marine resources.



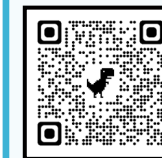
Find more ethical labels here! (JP)

Learn About Fish at the "School of Fish"

A mini-aquarium opened in Tarumi Ward's "School of Fish" last year. You can see 40 different species of marine life that live in the waters near Kobe, including red sea bream, common octopus, clownfish, and more. The staff are also well-versed in fish facts, and the whole family can join fun workshops like salt-making.

Hours: 10:00-17:00 Free admission

(*Workshops require a fee)



Tap here for more details! (JP)

