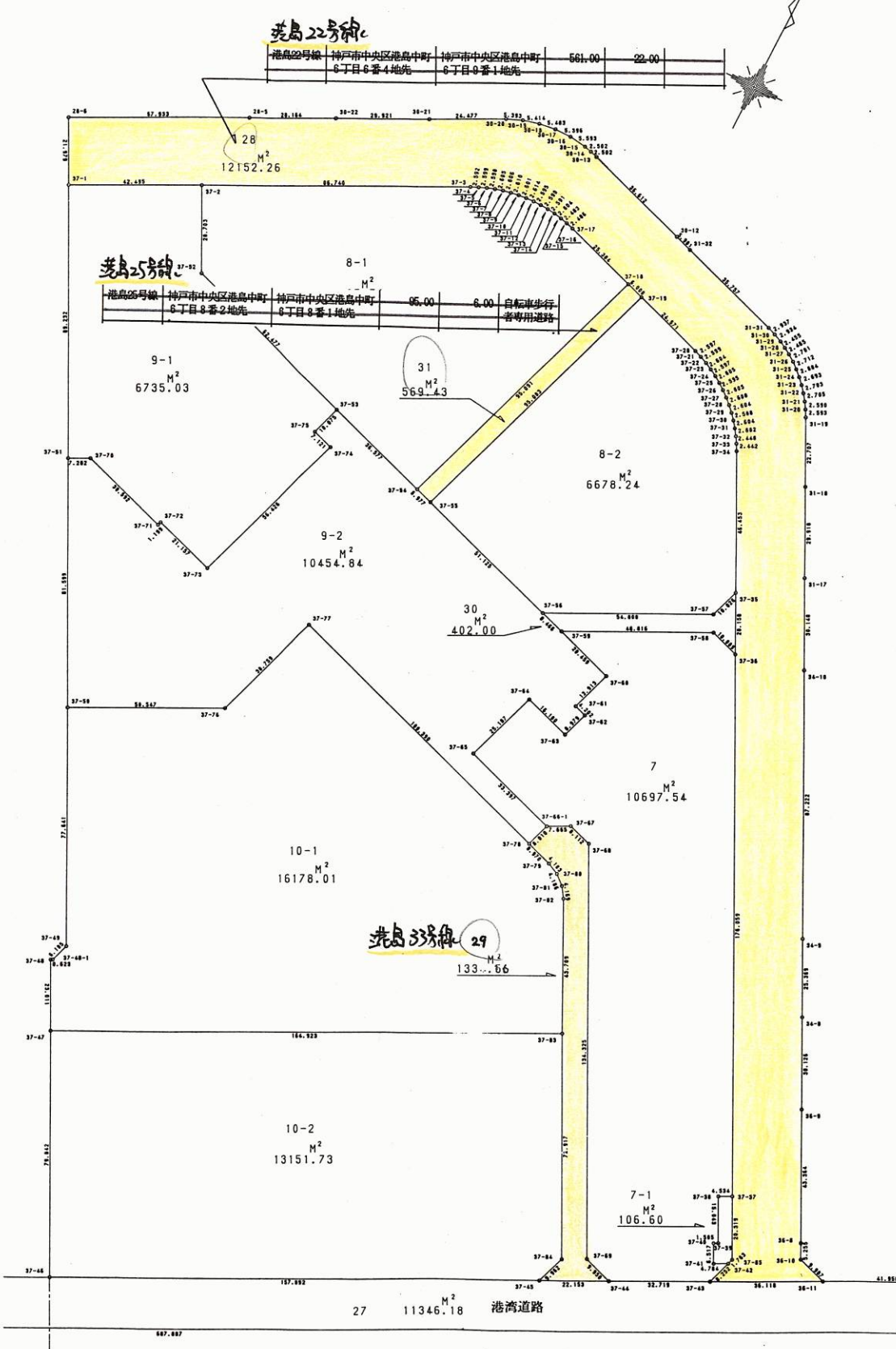
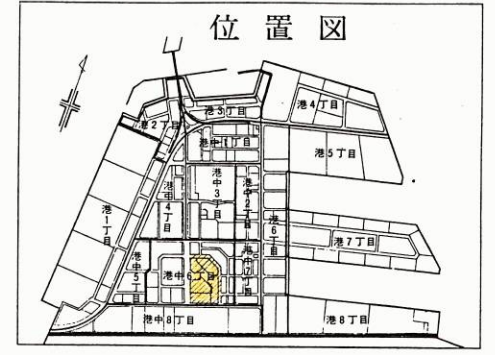


ポートアイランド確定図 S=1:1,000 港島中町6丁目

平成3年6月作成



地番 7 地目

点名	X	Y	辺長
37-59	-147970.383	81000.669	20.459
37-60	-147976.780	81020.102	13.913
37-61	-147990.007	81015.786	4.202
37-62	-147991.318	81019.778	8.979
37-63	-147999.844	81016.963	16.180
37-64	-147994.808	81001.587	25.187
37-65	-148018.736	80993.724	33.397
37-66-1	-148029.145	81025.458	7.665
37-67	-148025.587	81032.247	8.112
37-68	-148028.068	81039.970	134.325
37-69	-148147.926	81100.611	9.950
37-44	-148151.054	81110.057	32.719
37-43	-148136.280	81139.251	8.252
37-42	-148128.446	81141.843	4.784
37-41	-148130.618	81137.581	6.517
37-40	-148124.801	81134.643	1.505
37-39	-148124.113	81135.982	15.043
37-38	-148110.703	81129.165	15.043
37-37	-148126.771	81142.394	20.319
37-36	-147951.529	81053.789	10.009
37-58	-147948.407	81044.259	48.816
面積		10697.54	
地積		10697.54	

地番 7-1 地目

点名	X	Y	辺長
37-38	-148110.703	81129.165	15.043
37-39	-148124.113	81135.982	1.505
37-40	-148124.801	81134.643	6.517
37-41	-148130.618	81137.581	4.784
37-42	-148128.446	81141.843	1.763
37-43	-148126.771	81142.394	20.319
37-37	-148108.648	81133.207	4.534
面積		106.6050440	
地積		106.60	

地番 8-1 地目

点名	X	Y	辺長
37-2	-147893.478	80831.282	28.703
37-52	-147919.088	80844.243	62.477
37-53	-147938.559	80903.608	36.577
37-54	-147949.947	80938.367	95.091
37-17	-147859.581	80967.968	25.384
37-18	-147851.686	80943.843	2.486
37-16	-147850.986	80941.458	2.483
37-15	-147850.394	80939.047	2.604
37-14	-147849.920	80936.487	2.591
37-13	-147849.604	80933.915	2.590
37-12	-147849.443	80931.330	2.595
37-11	-147849.389	80928.736	2.614
37-10	-147849.499	80926.124	2.601
37-9	-147849.761	80923.536	2.610
37-8	-147850.166	80920.958	2.606
37-7	-147850.701	80918.408	2.605
37-6	-147851.402	80915.899	2.598
37-5	-147852.262	80913.447	2.599
37-4	-147853.255	80911.045	2.592
37-3	-147854.349	80908.695	86.740
面積		8295.7407925	
地積		8295.74	

地番 7-1 地目

点名	X	Y	辺長
37-38	-148110.703	81129.165	15.043
37-39	-148124.113	81135.982	1.505
37-40	-148124.801	81134.643	6.517
37-41	-148130.618	81137.581	4.784
37-42	-148128.446	81141.843	1.763
37-43	-148126.771	81142.394	20.319
37-37	-148108.648	81133.207	4.534
面積		106.6050440	
地積		106.60	

地番 8-2 地目

点名	X	Y	辺長
37-19	-147861.471	80973.663	95.083
37-55	-147861.822	80944.042	51.125
37-56	-147867.074	81041.552	10.026
37-57	-147843.074	81041.552	10.026
37-35	-147933.544	81044.665	46.453
37-34	-147892.094	81023.694	2.442
37-33	-147889.948	81022.528	2.448
37-32	-147887.862	81021.246	2.602
37-31	-147885.736	81019.745	2.604
37-30	-147883.661	81018.171	2.588
37-29	-147881.712	81016.468	2.604
37-28	-147879.839	81014.659	2.608
37-27	-147878.089	81012.725	2.605
37-26	-147876.429	81010.717	2.595
37-25	-147874.902	81008.619	2.605
37-24	-147873.486	81006.432	2.597
37-23	-147872.238	81004.155	2.604
37-22	-147871.058	81001.834	2.599
37-21	-147870.038	80999.444	2.597
37-20	-147869.157	80997.001	24.571
面積		6678.2462200	
地積		6678.24	

地番 9-1 地目

点名	X	Y	辺長
37-1	-147912.622	80793.343	89.232
37-51	-147992.220	80833.672	7.202
37-70	-147988.976	80840.102	30.592
37-71	-147998.515	80869.169	1.199
37-72	-147997.379	80869.551	21.157
37-73	-148003.958	80889.659	56.426
37-74	-147950.351	80907.270	7.121
37-75	-147948.143	80900.500	10.175
37-53	-147938.559	80903.608	62.477
37-52	-147919.088	80844.243	28.703
37-2	-147893.478	80831.282	42.495
面積		6735.0356765	
地積		6735.03	

地番 9-2 地目

点名	X	Y	辺長
37-51	-147992.220	80833.672	81.599
37-50	-148065.070	80870.431	50.547
37-76	-148042.228	80915.523	38.759
37-77	-148005.411	80927.638	100.390
37-78	-148036.770	81023.004	8.010
37-66-1	-148029.145	81025.458	33.397
37-85	-148018.736	80993.724	25.187
37-64	-147994.808	81001.587	16.180
37-63	-147999.844	81016.963	8.979
37-62	-147991.318	81019.778	4.202
37-61	-147990.007	81015.786	13.913
37-60	-147976.780	81020.102	20.459
37-59	-147970.383	81000.669	8.466
37-56	-147967.761	80992.619	51.125
37-55	-147951.822	80944.042	5.977
37-54	-147949.947	80938.367	36.577
37-53	-147938.559	80903.608	10.075
37-75	-147948.143	80900.500	7.121
37-74	-147950.351	80907.270	56.426
37-73	-148003.958	80889.659	21.157
37-72	-147997.379	80869.551	1.199
37-71	-147998.515	80869.169	30.592
37-70	-147988.976	80840.102	7.202
面積		10454.8426720	
地積		10454.84	

地番 10-1 地目

点名	X	Y	辺長
37-50	-148065.070	80870.431	77.641
37-49	-148134.394	80905.332	6.185
37-48-1	-148140.274	80903.474	0.623
37-48	-148140.554	80902.917	23.011
37-47	-148161.075	80913.329	164.923
37-83	-148086.580	81060.469	43.709
37-82	-148047.530	81040.832	4.169
37-81	-148044.081	81038.490	4.186
37-80	-148041.367	81035.303	4.183
37-79	-148039.569	81031.526	8.970
37-78	-148036.770	81023.004	100.390
37-77	-148005.411	80927.638	38.759
37-76	-148042.228	80915.523	50.547
面積		16178.0165735	
地積		16178.01	

地番 10-2 地目

点名	X	Y	辺長
37-47	-148161.075	80913.329	79.842
37-46	-148232.309	80949.391	157.892
37-45	-148161.054	81090.290	9.962
37-84	-148151.609	81093.456	72.917
37-83	-148086.580	81060.469	164.923
面積		13151.7304800	
地積		13151.73	

地番 27 地目

点名	X	Y	辺長
B.22	-148384.971	80647.769	16.425
B.23	-148399.631	80655.177	687.887
B.27	-148089.165	81269.016	16.548
B.28	-148074.398	81261.548	15.699
35-6	-148081.205	81248.104	35.926
35-7	-148097.405	81216.038	7.991
36-12	-148101.016	81208.909	41.958
36-11	-148119.942	81171.462	36.118
37-44	-148161.054	81110.057	22.153
37-43	-148136.280	81139.251	32.719
37-45	-148161.054	81090.290	157.892
37-46	-148232.309	80949.391	60.031
27-6	-148259.445	80895.843	84.973
27-7	-148297.777	80820.007	65.938
27-8	-148327.566	80751.181	36.145
24-10	-148343.962	80728.959	70.450
24-11	-148375.722	80666.084	20.518
面積		11346.1859825	
地積		11346.18	

地番 29 地目

点名	X	Y	辺長
37-66-1	-148029.145	81025.458	8.010
37-78	-148036.770	81023.004	8.970
37-79	-148039.569	81031.526	4.183
37-80	-148041.367	81035.303	4.186
37-81	-148044.081	81038.490	4.169
37-82	-148047.530	81040.832	43.709
37-83	-148086.580	81060.469	72.917
37-84	-148151.609	81093.456	9.962
37-45	-148161.054	81090.290	22.153
37-44	-148161.054	81110.057	9.950
37-69	-148147.926	81100.611	134.325
37-68	-148028.068	81039.970	8.112
37-67	-148025.587	81032.247	7.665
面積		1334.5063010	
地積		1334.50	

地番 30 地目

点名	X	Y	辺長
37-56	-147967.761	80992.619	8.466
37-59	-147970.383	81000.669	48.816
37-58	-147948.407	81044.259	10.009
37-55	-147951.529	81053.789	20.158
37-57	-147933.544	81044.665	54.808
面積		402.0005895	
地積		402.00	

地番 28 地目

点名	X	Y	辺長
28-6	-147893.043	80783.355	21.979
37-1	-147912.622	80793.343	42.495
37-2	-147893.478	80831.282	86.740
37-3	-147854.349	80908.695	2.592
37-4	-147853.255	80911.045	2.599
37-5	-147852.262	80913.447	2.598
37-6	-147851.402	80915.899	2.605
37-7	-147850.701	80918.408	2.606
37-8	-147850.166	80920.958	2.610
37-9	-147849.761	80923.536	2.601
37-10	-147849.499	80926.124	2.614
37-11	-147849.389	80928.736	2.595
37-12	-147849.443	80931.330	2.590
37-13	-147849.604	80933.915	2.591
37-14	-147849.920	80936.487	2.604
37-15	-147850.394	80939.047	2.483
37-16	-147850.986	80941.458	2.486
37-17	-147851.686	80943.843	25.384
37-18	-147859.581	80967.968	6.000
37-19	-147861.471	80973.663	24.571
37-20	-147869.157	80997.001	2.59